

MULTILIFT

First generation, until June 2012

M

50/60 Hz

LC 221 controller (Replacement kit for LC 109)

P/N MULTILIFT	MULTILIFT	Old LC 109	New LC 221	Description
96075436	M.12.1.4 1X230V	96075505	98376398	Kit, LC 221.1.230.1.10.60 with sensor pipe and 4m pressure tube
96075443	M.15.1.4 1X230V	96075506	98376398	Kit, LC 221.1.230.1.10.60 with sensor pipe and 4m pressure tube
96075441	M.12.3.4 3X400V	96472552	98376399	Kit, LC 221.1.400.3.6 MPU with sensor pipe and 4m pressure tube
96075444	M.15.3.4 3X400V	96482996	98376399	Kit, LC 221.1.400.3.6 MPU with sensor pipe and 4m pressure tube
96075438	M.22.3.4 3X400V	96482996	98376399	Kit, LC 221.1.400.3.6 MPU with sensor pipe and 4m pressure tube
96075457	M.24.3.2 3X400V	96482996	98376399	Kit, LC 221.1.400.3.6 MPU with sensor pipe and 4m pressure tube
96477865	M.32.3.2 3X400V	96482996	98376400	Kit, LC 221.1.400.3.8 MPU with sensor pipe and 4m pressure tube
96075442	M.12.3.4 3X230V	96482997	98377118	Kit, LC 221.1.230.3.10 MPU with sensor pipe and 4m pressure tube
96075445	M.15.3.4 3X230V	96482997	98377118	Kit, LC 221.1.230.3.10 MPU with sensor pipe and 4m pressure tube
96075447	M.22.3.4 3X230V	96482997	98377118	Kit, LC 221.1.230.3.10 MPU with sensor pipe and 4m pressure tube
96075449	M.24.3.2 3X230V	96482997	98377118	Kit, LC 221.1.230.3.10 MPU with sensor pipe and 4m pressure tube
96477864	M.32.3.2 3X230V	96482997	98377119	Kit, LC 221.1.230.3.16 MPU with sensor pipe and 4m pressure tube

Capacitor

Kit No	96472490	96472493
Description	35 µF	50 µF
Capacitor	1	1

CU 211 control unit

Kit No	96472551	96472553	96472552
Description	230 V 1-phase	230 V 3-phase	400 V 3-phase
Control unit	1	1	1

Flange

Pos.	Kit No	91043772
12	Discharge flange	1

Motor kits, complete

P/N	Description
96590668	KIT, MOTOR M15.1.4 1X230V
96590658	KIT, MOTOR M15.3.4 3X400V
96636455	KIT, MOTOR M22.3.4 3X230V
96590665	KIT, MOTOR M22.3.4 3X400V
91043566	KIT, MOTOR M24.3.2 3X400V
96636456	KIT, MOTOR M24.3.4 3X230V
96636458	KIT, MOTOR M32.3.2 3X230V
96590661	KIT, MOTOR M32.3.2 3X400V

Kit adapter flange for non-return valve, cast iron

Description/kit No	96650143
Flange NRV	1
Gasket DN80	1
Screw M8x65	5
Washer	5
O-ring D100x10	1
Screw M16X70 DIN 931	8
WASHER A17	8
Nut M16	8

Sensor (Replacement kit)

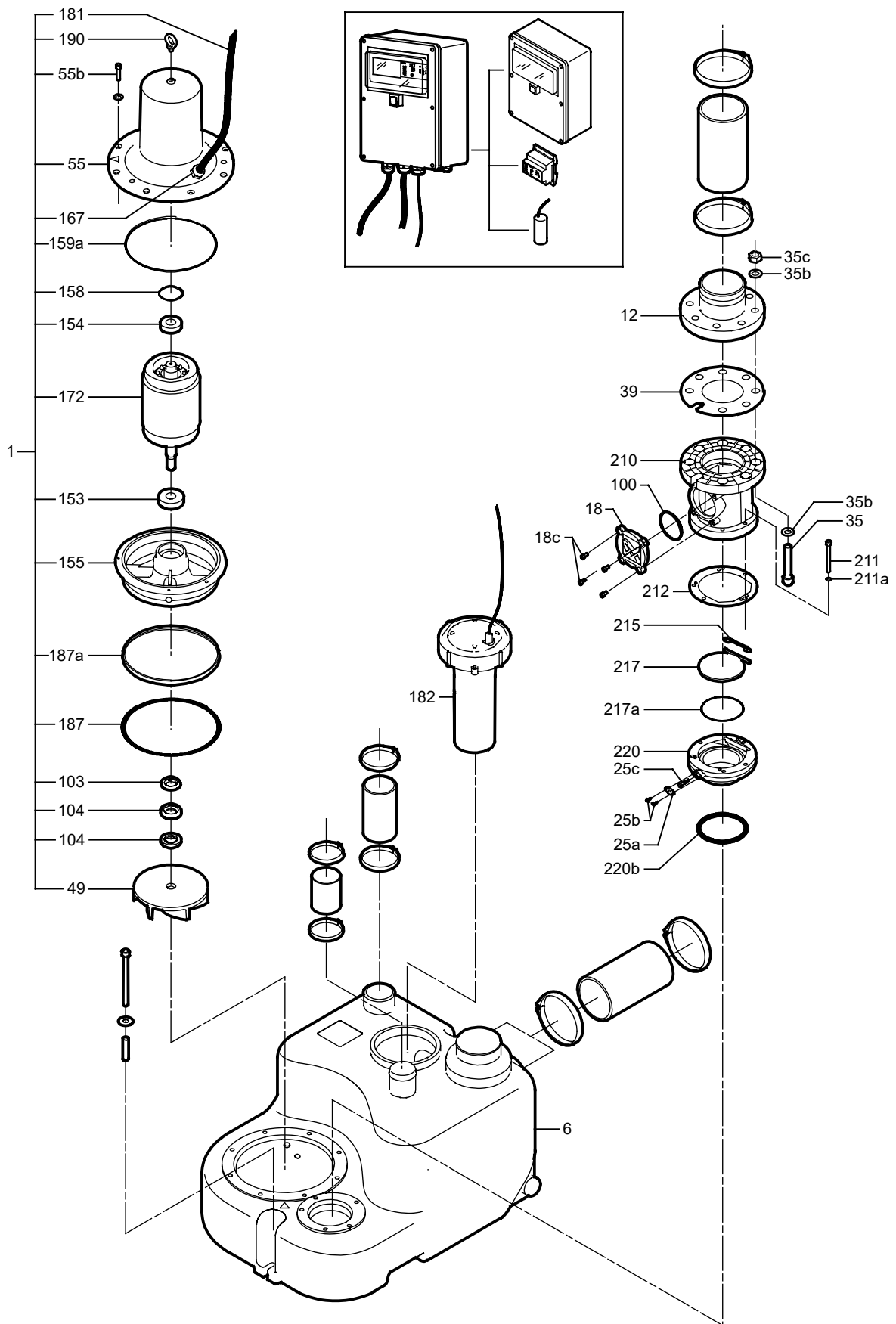
Pos.	Kit No	98592984
182	Kit, Sensor Multilift MSS/M/MD - MK1	1

Wear parts

Pos.	Description/kit No	96475603
55b	Screw	8
55c	Screw	3
55d	Washer	8
103	Seal ring	2
104	Seal ring	1
153	Ball bearing	1
154	Ball bearing	1
158	Corrugated spring	1
159a	O-ring	1
187	O-ring	1
187a	Lip seal	1
-	Oil 0.05 l	1



M



TM024218

MD

LC 221 controller (Replacement kit for LCD 109)

P/N MULTILIFT	MULTILIFT	Old LCD 109	New LC 221	Description	
96075450	MD.15.1.4 1X230V	96075509	98376401	Kit, LC 221.2.230.1.10.60	with sensor pipe and 4m pressure tube
96075437	MD.15.3.4 3X400V	96075510	98376402	Kit, LC 221.2.400.3.6 MPU	with sensor pipe and 4m pressure tube
96075439	MD.22.3.4 3X400V	96476699	98376402	Kit, LC 221.2.400.3.6 MPU	with sensor pipe and 4m pressure tube
96075455	MD.24.3.2 3X400V	96476699	98376402	Kit, LC 221.2.400.3.6 MPU	with sensor pipe and 4m pressure tube
96477866	MD.32.3.2 3X400V	96476699	98376403	Kit, LC 221.2.400.3.8 MPU	with sensor pipe and 4m pressure tube
96075452	MD.15.3.4 3X230V	96075511	98377120	Kit, LC 221.2.230.3.10 MPU	with sensor pipe and 4m pressure tube
96075454	MD.22.3.4 3X230V	96476700	98377120	Kit, LC 221.2.230.3.10 MPU	with sensor pipe and 4m pressure tube
96075456	MD.24.3.2 3X230V	96476700	98377120	Kit, LC 221.2.230.3.10 MPU	with sensor pipe and 4m pressure tube
96477867	MD.32.3.2 3X230V	96476700	98377141	Kit, LC 221.2.230.3.16 MPU	with sensor pipe and 4m pressure tube

Capacitor

Kit No	96472493
Description	50 µF
Capacitor	1

CU 212 control unit

Kit No	96472554	96472556	96472555
Description	230 V 1-phase	230 V 3-phase	400 V 3-phase
CU 212 control unit	1	1	1

Discharge flange

Pos.	Kit No	91043772
12	Discharge flange	1

Motor kits, complete

P/N	Description
96590668	KIT, MOTOR M15.1.4 1X230V
96590658	KIT, MOTOR M15.3.4 3X400V
96636455	KIT, MOTOR M22.3.4 3X230V
96590665	KIT, MOTOR M22.3.4 3X400V
91043566	KIT, MOTOR M24.3.2 3X400V
96636456	KIT, MOTOR M24.3.4 3X230V
96636458	KIT, MOTOR M32.3.2 3X230V
96590661	KIT, MOTOR M32.3.2 3X400V

Kit adapter flange for non-return valve, cast iron

Description/kit No	96650143
Flange NRV	1
Gasket DN80	1
Screw M8x65	5
Washer	5

Description/kit No	96650143
O-ring D100x10	1
Screw M16X70 DIN 931	8
WASHER A17	8
Nut M16	8

Sensor (Replacement kit)

Pos.	Kit No	98592984
182	Kit, Sensor Multilift MSS/M/MD - MK1	1

T-Connection

Pos.	Kit No	96703850
13	T-connection	1

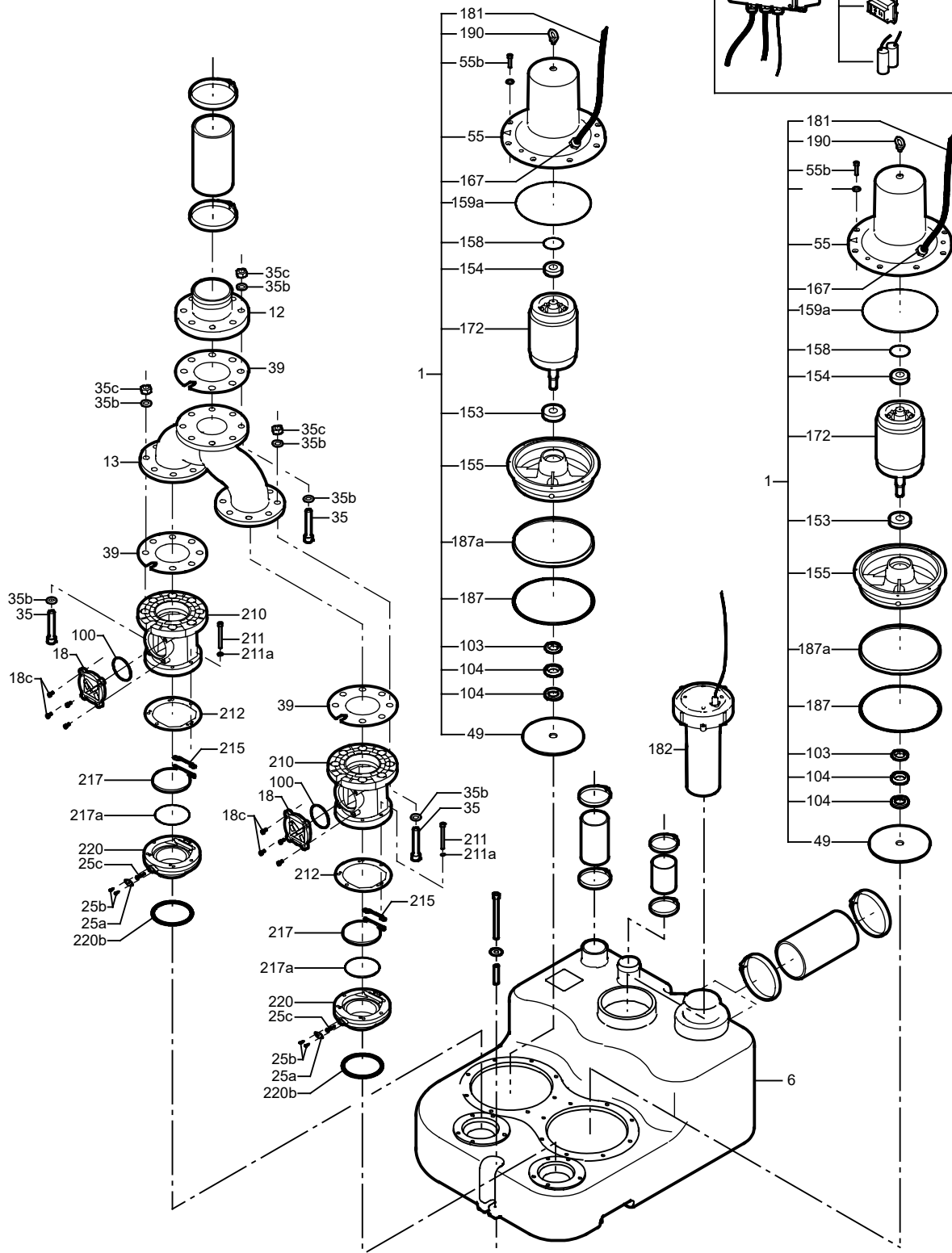
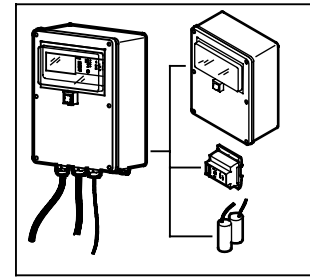
Wear parts

Pos.	Description/kit No	96475603
55b	Screw	8
55c	Screw	3
55d	Washer	8
103	Seal ring	2
104	Seal ring	1
153	Ball bearing	1
154	Ball bearing	1
158	Corrugated spring	1
159a	O-ring	1
187	O-ring	1
187a	Lip seal	1
-	Oil 0.05 l	1



MD

MULTILIFT



TM024217

MSS 50/60 Hz

LC 221 controller (Replacement kit for LC 109)

P/N MULTILIFT	MULTILIFT	Old LC(D) 109	New P/N	Description
96610038	MSS.12.1.4 1X230V	96075505	98376398	Kit, LC 221.1.230.1.10.60 with sensor pipe and 4m pressure tube
96610039	MSS.12.3.4 3X400V	96472552	98376399	Kit, LC 221.1.400.3.6 MPU with sensor pipe and 4m pressure tube
96610040	MSS.12.3.4 3X230V	96075508	98377118	Kit, LC 221.1.230.3.10 MPU with sensor pipe and 4m pressure tube

Capacitor

Kit No	96472490	96472493
Description	35 µF	50 µF
Capacitor	1	1

CU 211 control unit

Control unit	CU 211		
Kit No	96472551	96472553	96472552
Description	230 V single-phase	230 V three-phase	400 V three-phase
CU 211 control unit	1	1	1

Flange

Pos.	Kit No	91043772
12	Discharge flange	1

Motor kits, complete

P/N	Description
96590654	KIT, MOTOR M12.1.4 1X230V
91043561	KIT, MOTOR M12.3.4 3X400V

Kit adapter flange for non-return valve, cast iron

Description/kit No	96650143
Flange NRV	1
Gasket DN80	1
Screw M8x65	5
Washer	5
O-ring D100x10	1
Screw M16X70 DIN 931	8
WASHER A17	8
Nut M16	8

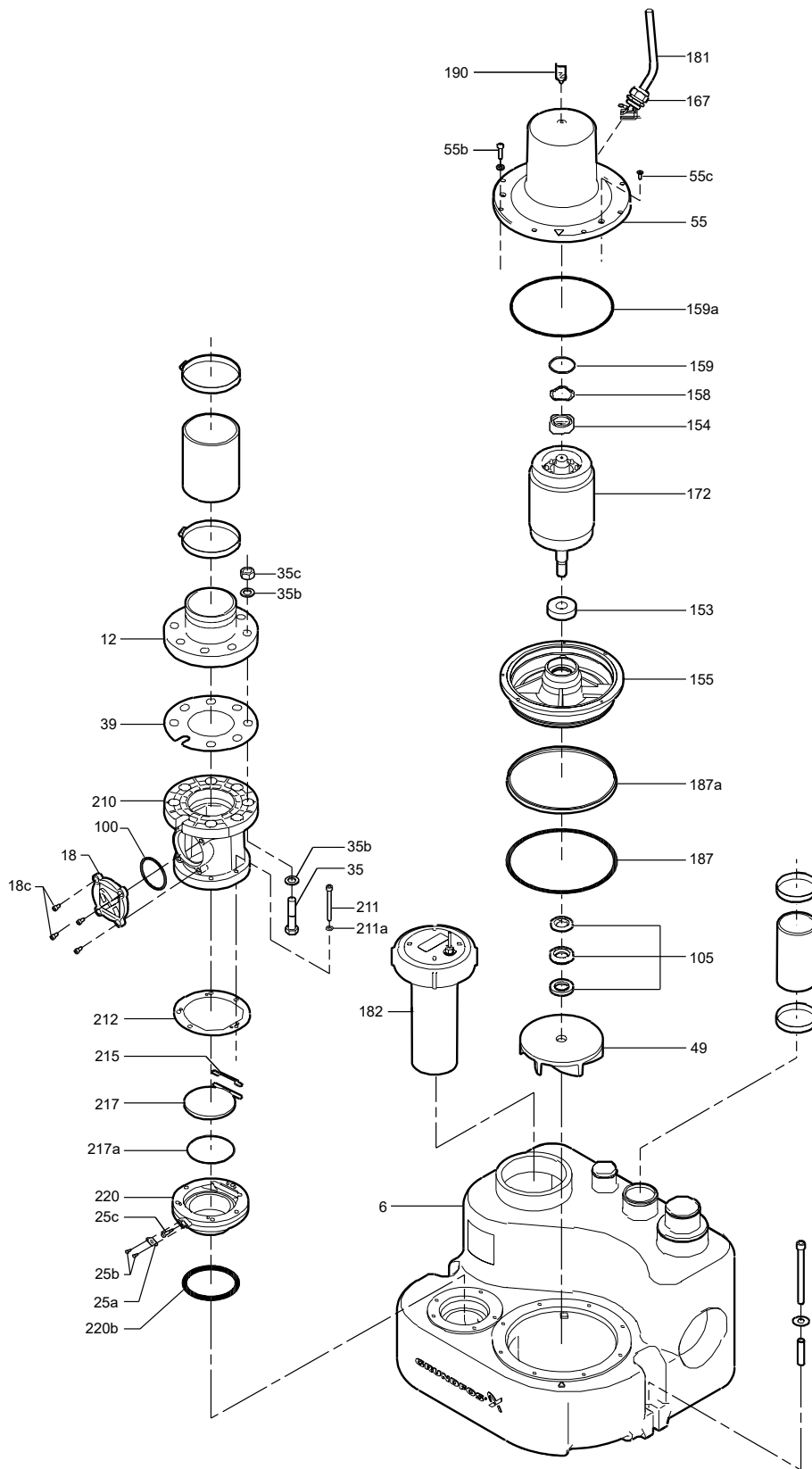
Sensor (Replacement kit)

Pos.	Kit No	98592984
182	Kit, Sensor Multilift MSS/M/MD - MK1	1

Wear parts

Pos.	Description/kit No	96475603
55b	Screw	8
55c	Screw	3
55d	Washer	8
103	Seal ring	2
104	Seal ring	1
153	Ball bearing	1
154	Ball bearing	1
158	Corrugated spring	1
159a	O-ring	1
187	O-ring	1
187a	Lip seal	1
-	Oil 0.05 l	1

MSS



TM033449

MLD**LC 221 controller (Replacement kit for LCD 109)**

P/N MULTILIFT	MULTILIFT	Old LC(D) 109	New P/N	Description
96610012	MLD.15.1.4 1X230V	96075509	98167915	Kit, LC 221.2.230.1.10.60 with sensor pipe and 4m pressure tube
96610014	MLD.15.3.4 3X400V	96075510	98369890	Kit, LC 221.2.400.3.6 MPU with sensor pipe and 4m pressure tube
96610018	MLD.22.3.4 3X400V	96476699	98369890	Kit, LC 221.2.400.3.6 MPU with sensor pipe and 4m pressure tube
96610032	MLD.24.3.2 3X400V	96476699	98369890	Kit, LC 221.2.400.3.6 MPU with sensor pipe and 4m pressure tube
96610035	MLD.32.3.2 3X400V	96476699	98167919	Kit, LC 221.2.400.3.8 MPU with sensor pipe and 4m pressure tube
96610015	MLD.15.3.4 3X230V	96075511	98167918	Kit, LC 221.2.230.3.16 MPU with sensor pipe and 4m pressure tube
96610030	MLD.22.3.4 3X230V	96476700	98167918	Kit, LC 221.2.230.3.16 MPU with sensor pipe and 4m pressure tube
96610033	MLD.24.3.2 3X230V	96476700	98167918	Kit, LC 221.2.230.3.16 MPU with sensor pipe and 4m pressure tube
96610037	MLD.32.3.2 3X230V	96476700	98167918	Kit, LC 221.2.230.3.16 MPU with sensor pipe and 4m pressure tube

Capacitor

Kit No	96472490	96472493
Description	35 µF	50 µF
Capacitor	1	1

CU 212 control unit

Kit No	96472554	96472556	96472555
Description	230 V 1-phase	230 V 3-phase	400 V 3-phase
Control unit	1	1	1

Discharge flange

Pos.	Kit No	91043772
12	Discharge flange	1

Motor kits, complete

P/N	Description
96590668	KIT, MOTOR M15.1.4 1 x 230 V
96590658	KIT, MOTOR M15.3.4 3 x 400 V
96636455	KIT, MOTOR M22.3.4 3 x 230 V
96590665	KIT, MOTOR M22.3.4 3 x 400 V
91043566	KIT, MOTOR M24.3.2 3 x 400 V
96636456	KIT, MOTOR M24.3.4 3 x 230 V
96636458	KIT, MOTOR M32.3.2 3 x 230 V
96590661	KIT, MOTOR M32.3.2 3 x 400 V

Kit adapter flange for non-return valve, cast iron

Description/kit No	96650143
Flange NRV	1
Gasket DN80	1
Screw M8x65	5
Washer	5
O-ring D100x10	1
Screw M16X70 DIN 931	8
WASHER A17	8
Nut M16	8

Sensor (Replacement kit)

Pos.	Kit No	98628411
182	Kit, Sensor MULTILIFT MLD/MD1/MDV Mk.1	1

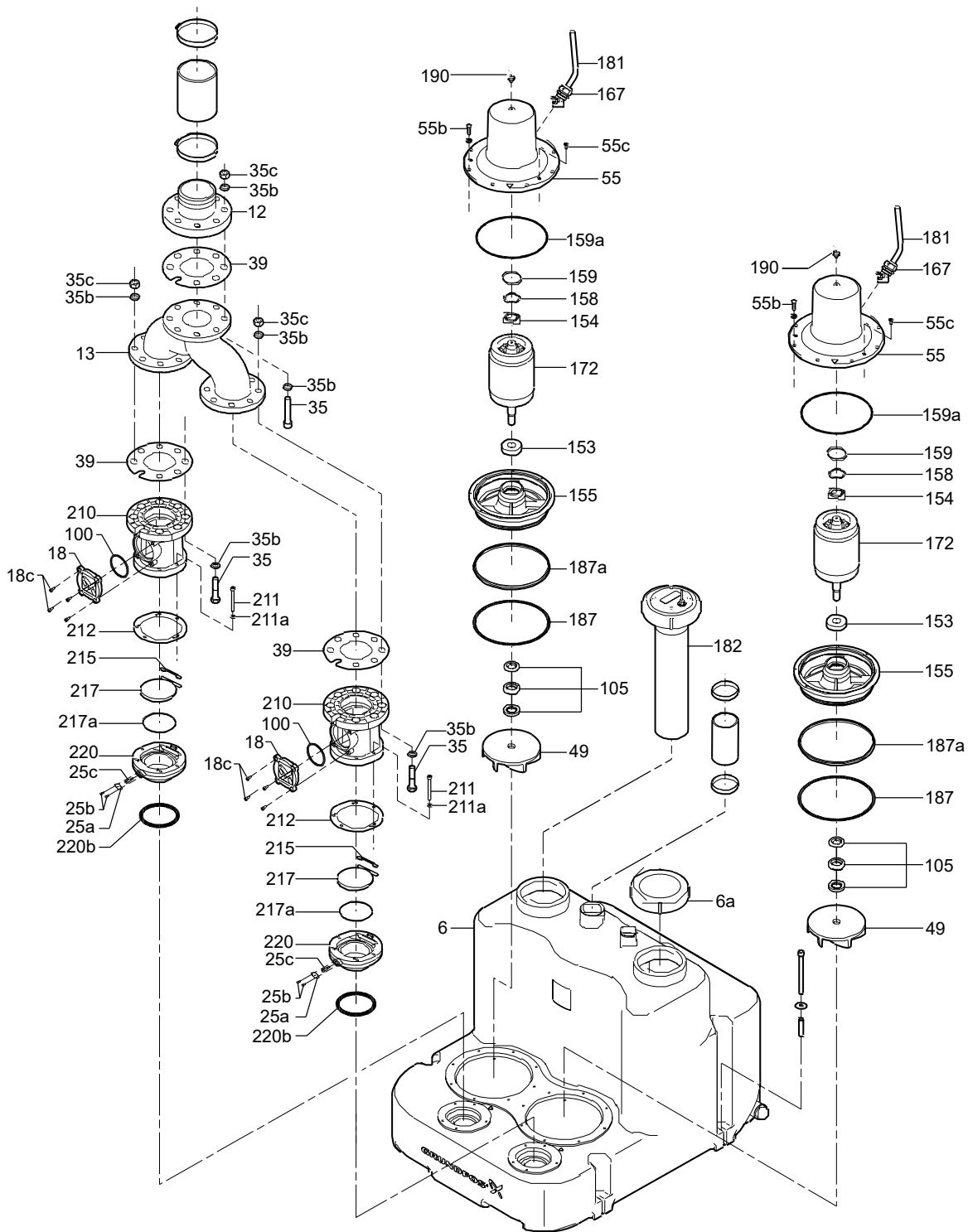
T-Connection

Pos.	Kit No	96703850
13	T-connection	1

Wear parts

Pos.	Description/kit No	96475603
55b	Screw	8
55c	Screw	3
55d	Washer	8
103	Seal ring	2
104	Seal ring	1
153	Ball bearing	1
154	Ball bearing	1
158	Corrugated spring	1
159a	O-ring	1
187	O-ring	1
187a	Lip seal	1
-	Oil 0.05 l	1

MLD



TM033452

96488862 06.2022

GRUNDFOS Holding A/S
Poul Due Jensens Vej 7
DK-8850 Bjerringbro
Tel: +45 87 50 14 00
www.grundfos.com

GRUNDFOS 